



Model Number	Output Volts	Output Current 100 Vac Convection	Output Current 240 Vac Convection	90-270 Vac Fan Cooled	Ripple & Noise	Total Regulation	OVP Threshold
GNT212G	12 V	8.3 A	12.5 A	16.7 A	120 mV	+/-2%	14 +/-1 V
GNT215G	15 V	6.7 A	10.0 A	13.3 A	150 mV	+/-2%	17.6 +/-1 V
GNT218G	18 V	5.6 A	8.3 A	11.1 A	180 mV	+/-2%	20.8 +/-1 V
GNT224G	24 V	4.2 A	6.3 A	8.3 A	240 mV	+/-2%	26.5 +/-1 V
GNT228G	28 V	3.6 A	5.4 A	7.1 A	250	+/-2%	34 +/-1.2 V
GNT236G	36 V	2.5 A	3.9 A	5.6 A	270 mV	+/-2%	39 +/-1.5 V
GNT248G	48 V	1.9 A	2.9 A	4.2 A	360 mV	+/-2%	55 +/-2 V

- **Notes:**
- 1. When input voltage <90 Vac, derate output power by approximately 20%.
- 2. Convection ratings shown are for 40 deg.C ambient. Derate load 2.5%/deg C to 70 deg C.
- 3. Fan cooled rating of 200 W @ 50 deg C requires 200 lfm airflow over unit.

## GNT200 - SINGLE OUTPUT - MECHANICAL SPECIFICATIONS

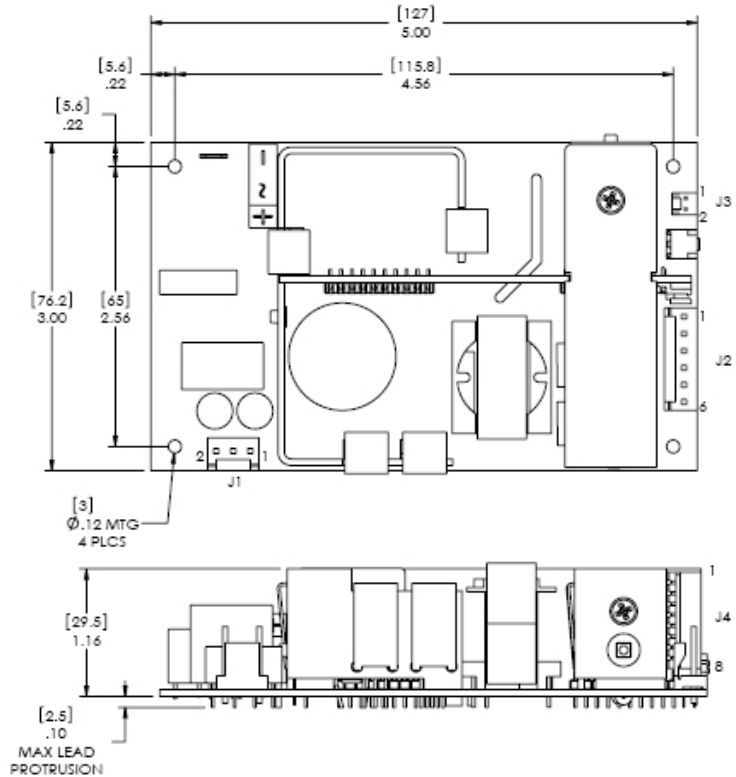
### CONNECTOR INFORMATION

J1: AC INPUT AMP 640445-3  
 PIN 1) AC LINE  
 PIN 2) AC NEUTRAL  
 MATING CONNECTOR: MOLEX 09-50-3031  
 MATING PINS: MOLEX 08-52-0112

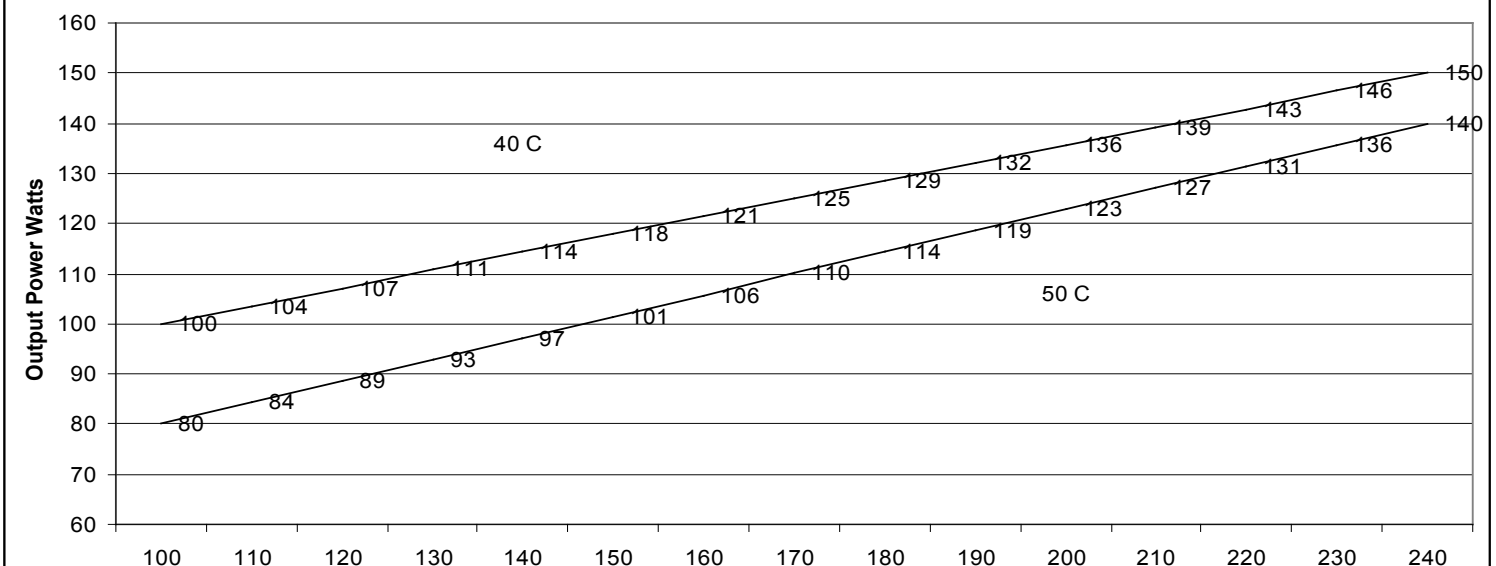
J2: DC OUTPUT AMP 640445-6  
 PIN 1) +Vout  
 PIN 2) +Vout  
 PIN 3) +Vout  
 PIN 4) COMMON  
 PIN 5) COMMON  
 PIN 6) COMMON  
 MATING CONNECTOR: MOLEX 09-50-3061  
 MATING PINS: MOLEX 08-52-0112

J3: FAN OUTPUT AMP 640456-2  
 PIN 1) +12V @ 0.25A  
 PIN 2) FAN RTN (COMMON)  
 MATING CONNECTOR: AMP 1375820-2  
 MATING PINS: AMP 1375813-3

J4: SIGNALS MOLEX 22-05-7085  
 PIN 1) PS OFF  
 PIN 2) INHIBIT  
 PIN 3) PWR OK  
 PIN 4) DC OK  
 PIN 5) SIGNAL RTN (COMMON)  
 PIN 6) +5V @ 0.1A  
 PIN 7) -SENSE  
 PIN 8) +SENSE  
 MATING CONNECTOR: MOLEX 50-37-5083  
 MATING PINS: MOLEX 08-70-1040



### Convection Power vs. Line Voltage & Temperature



SL Power Electronics Corp., 6050 King Drive, Bldg. A, Ventura, CA 93003, USA. Phone:(805) 486 4565 Fax:(805) 487 8911 www.slpower.com Rev. 02/07.  
 Data Sheet © 2007 SL Power Electronics, Inc. The information and specifications contained in this data sheet are believed to be correct at time of publication.  
 However, SL Power accepts no responsibility for consequences arising from reproduction errors or inaccuracies. Specifications are subject to change without notice.